

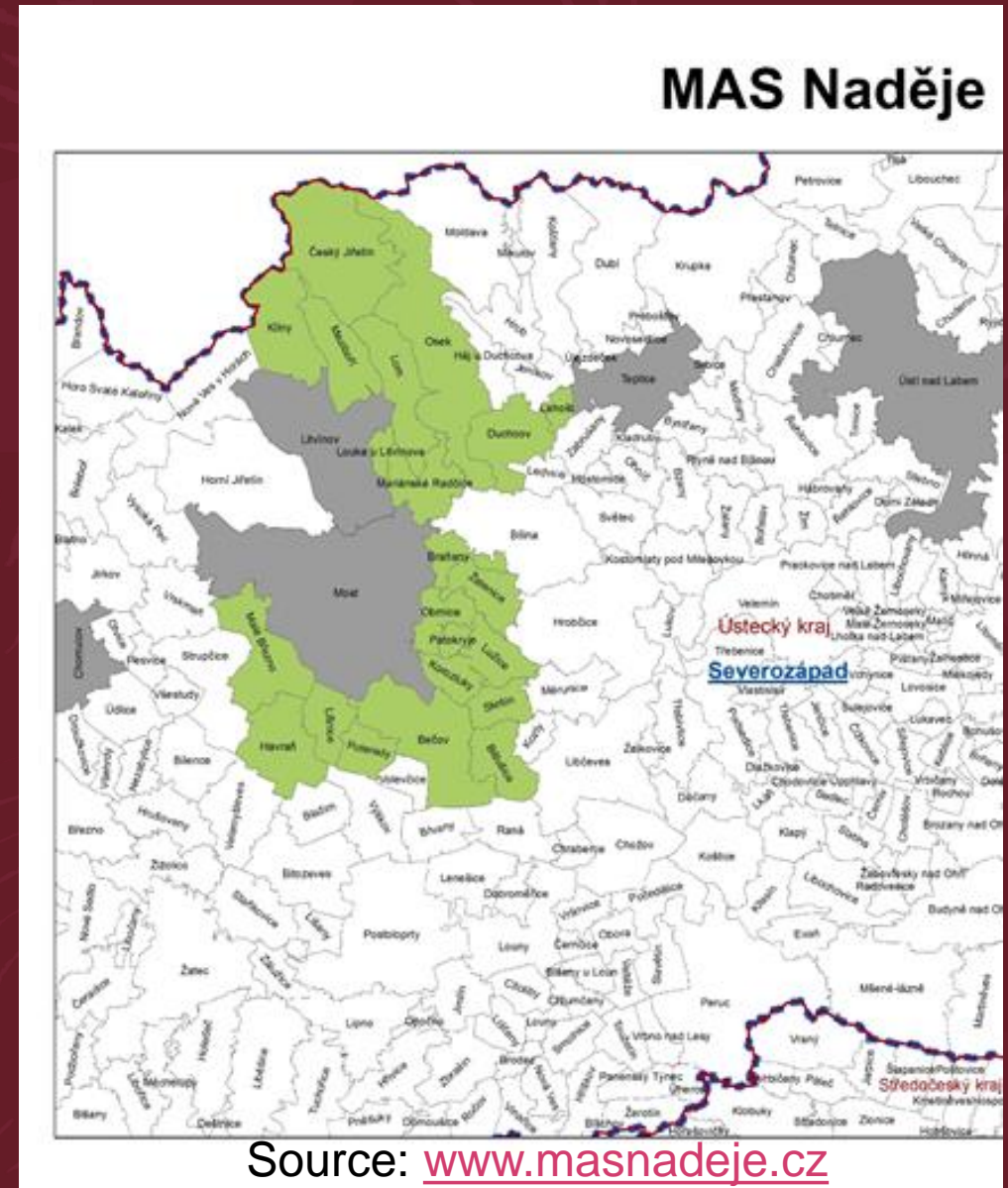
EVALUATION OF THE BENEFITS OF LAG FOR THE FORMATION OF REIMAGE OF MUNICIPALITIES IN COAL REGIONS

Ing. Martin Domín & Ing. Petr Hlaváček, Ph.D.

The project was created with the help of UJEP in Ústí nad Labem - Faculty of
Socio-Economics. Grant number: UJEP-SGS-2020-45-001-1

Project goal and introduction

- Identification of the benefit of LAG Naděje o.p.s. in the development of municipalities and territories and in improving their image.
- The local action group Naděje is located in the coal region in the area of the town of Most, where brown coal is actively mined.
- The municipalities in the specified area were already strongly affected by coal mining during the previous regime.



Research methods

- During the research, several expert methods were used, which allowed to comprehensively capture the territory of the local action group. A comparison was used, in which the LAG Naděje o.p.s. has been compared with other higher territorial units, with the Districts of Most and Teplice and with the Ústí nad Labem Region.
- Professional literature was used together with other professional materials, which the LAG itself creates.

Evaluation of the impacts of LAG projects on the territory

- Projects are evaluated according to how they affect the quality of public space.
- Material changes in space greatly affect the reimage and appearance of communities.
- These projects have been assessed in the research in terms of their contribution to achieving reimage of the territory.
- They were evaluated according to 5 categories according to the influence of the projects on the reimage of the territory, so that each number of points was assigned a verbal expression.

Evaluation of the impacts of LAG projects on the territory

Number evaluation	Explanation
1	Minimal effect
2	Weak influence
3	Average influence
4	Strong influence
5	Very strong influence

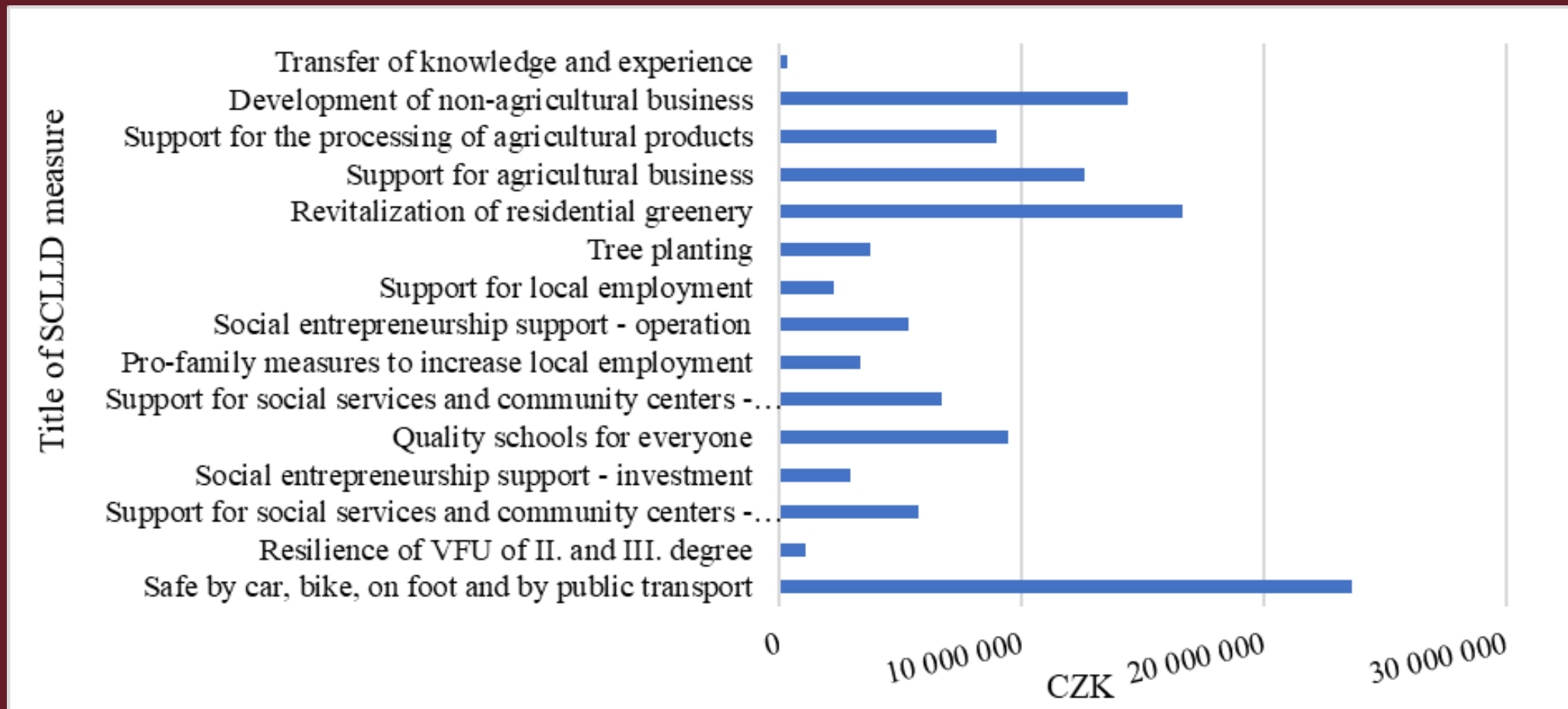
Problem analysis

- Implemented projects of LAG Naděje can be differentiated into two categories.
 - 1) Those where the applicant / partner for support was LAG Naděje o.p.s.
 - 2) Those projects, where LAG Naděje o.p.s. was the applicant / partner, involved a total of 16 implemented projects.

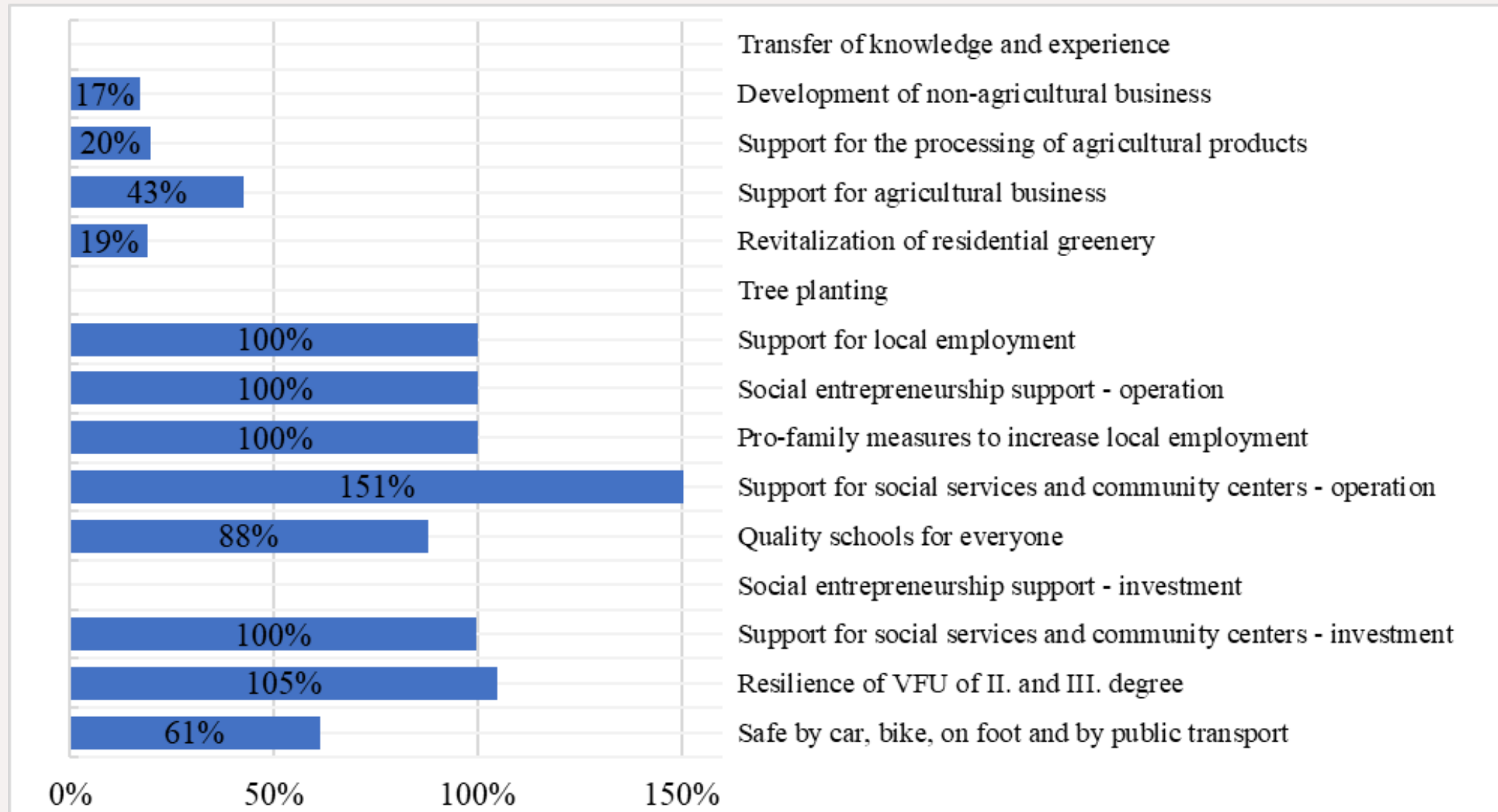
The LAG Naděje Action Plan

- The LAG's Action plan follows up on the set Strategic Objectives, Specific Objectives and Program Frameworks (MAS Naděje, 2013) , with a total of 15 set for the 2014-2020 programming period.
- Most funds were allocated to the measure called Safe by Car, Bicycle, Walk and Public Transport. In addition, great financial support (over CZK 15 million) was provided for the revitalization of residential greenery. The measure of non-agricultural development, as well as support for agricultural business, also received a high level of support. However, the allocation of funds does not reflect the actual state of interest in individual supports

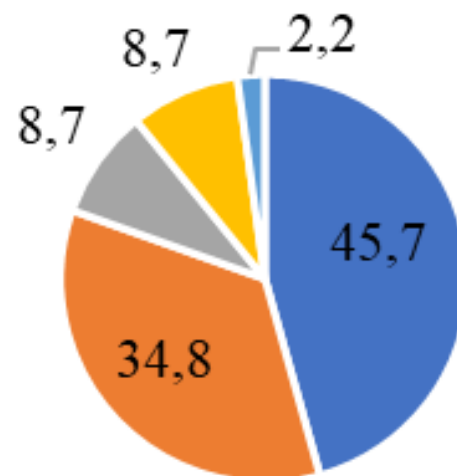
Allocation of funds of individual measures for the period 2014-2020



Rate of drawing the financial allocations for individual pillars of the LAG development strategy (LAG Naděje Action Plan) (as of 30 April 2020)



The assessment of projects' impact on the image of the territory (in %)



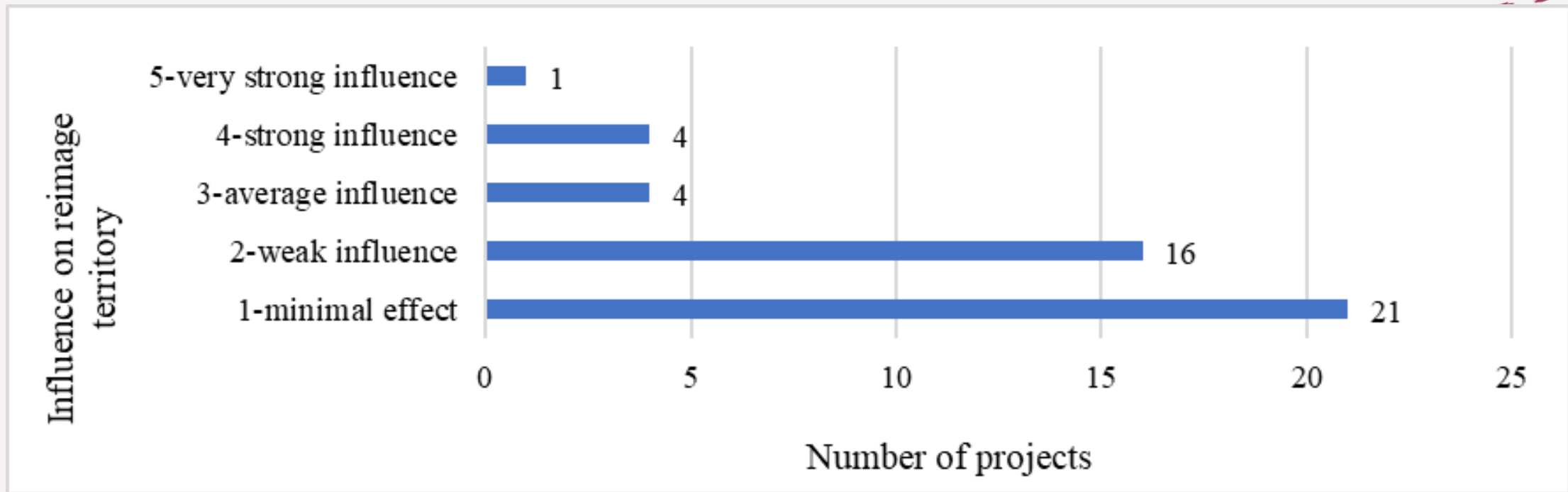
■ 1-minimal effect

■ 2-weak influence

■ 3-average influence

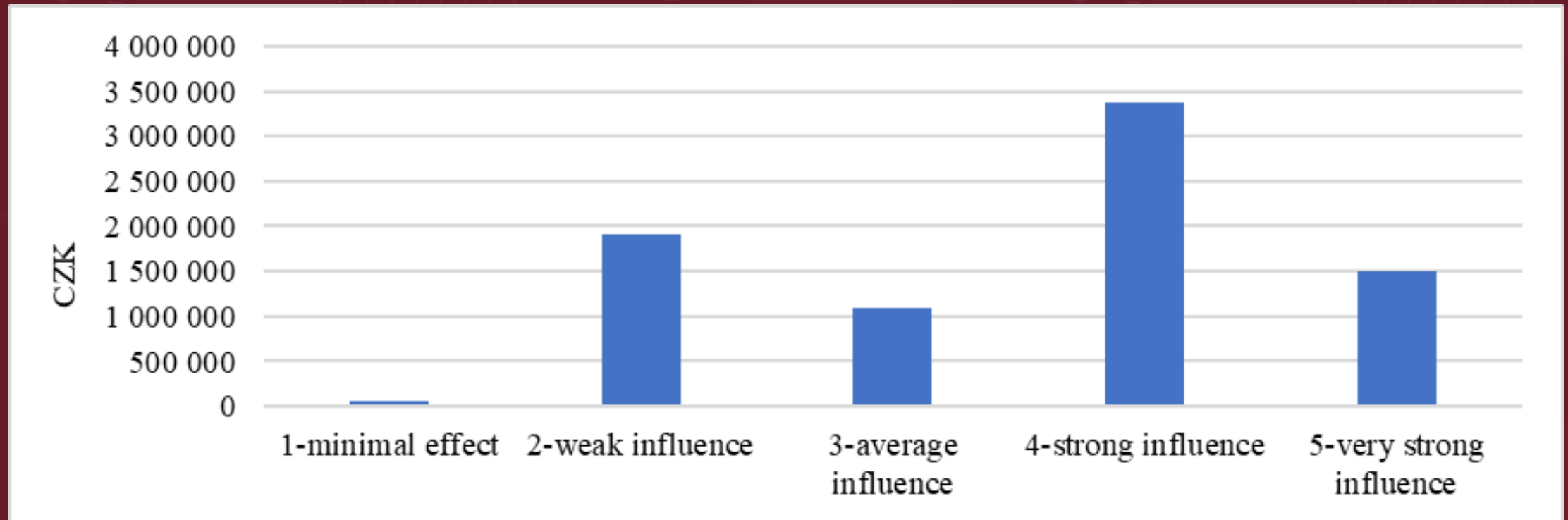
■ 4-strong influence

■ 5-very strong influence



Differentiation of projects according to the awarded assessment

Average eligible costs per 1 project according to the point scale



Case study: *Our friendly train stations project*



Source: AŽD (2019)

- Projekt má jasný dopad na území. Obnovená železniční trať spolu s opravenými stanicemi nejen zlepšuje výhled na krajinu jako takovou, ale nepochybně také pomáhá ekonomickým ukazatelům území. Trať spojuje 2 velká města a díky pravidelným spojům může pomoci se zaměstnáním nebo cestovním ruchem.

- The project received 5 points out of 5 on a rating scale.
- The project has an even greater impact, as it was implemented in locations where a high concentration of inhabitants is expected - at railway stations and railway tracks.
- This is a historically significant track, which in the past had a significant impact on the rural development of the Bohemian Central Mountains. This line connects Most and Lovosice and via its stations it links a total of 14 municipalities and 2 cities.
- **The aim of the project** was to obtain basic documentation of the tracks for the implementation of the subsequent renovation, which was successfully carried out at the mentioned Plum Track.

Project with development potential

- The U10 railway line is at a very good technical level. It belongs to the most modern railways in the Ústí nad Labem region. It is one of the projects that visually changed its surroundings.
- The train line improves the quality of life of the region's inhabitants. Not only does it help to improve the accessibility of cities and municipalities by public transport, but it is also an important landscape element.

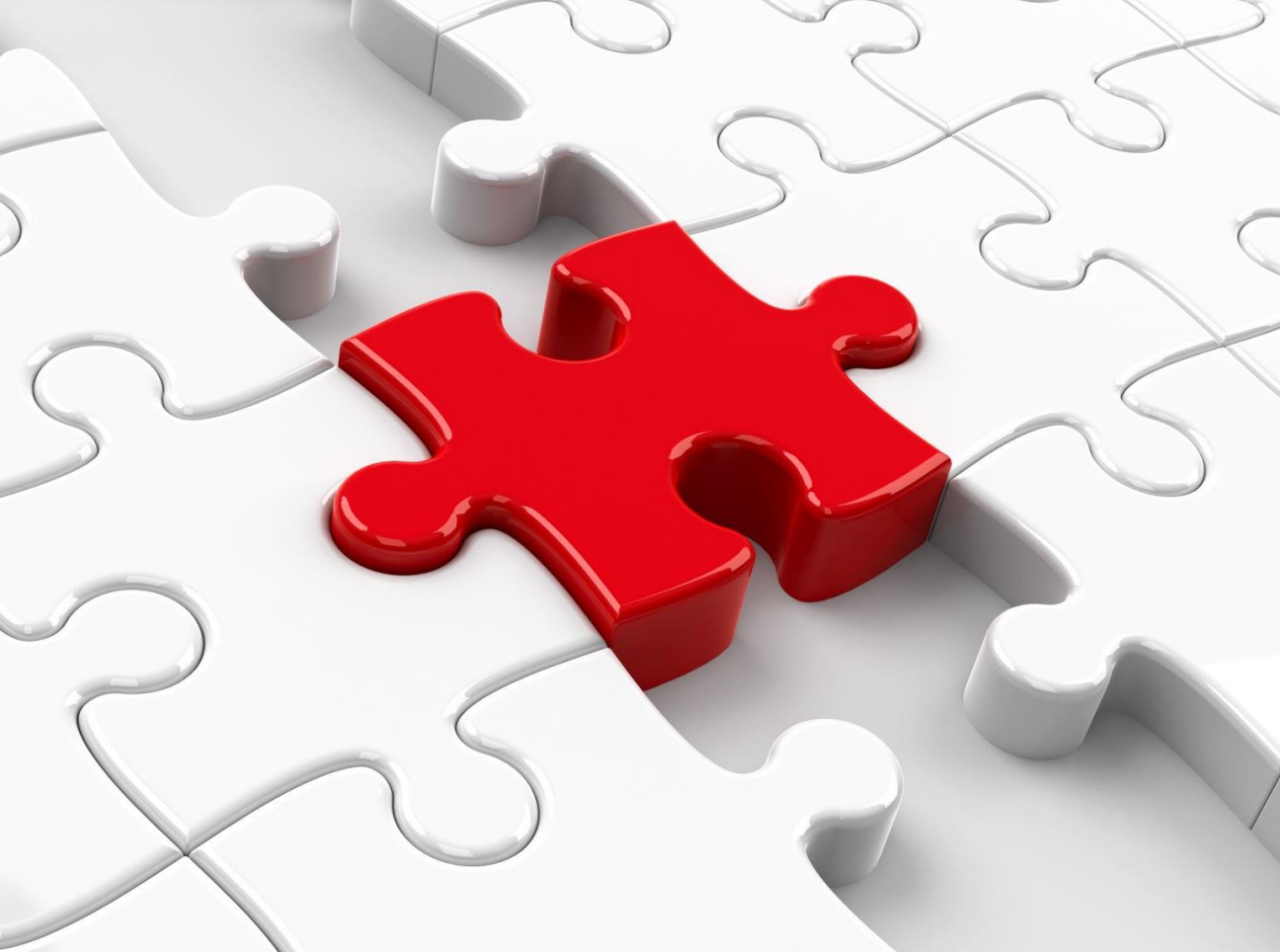


Discussion and conclusion

- The Local Action Group Naděje o.p.s. has been operating in its entrusted territory since 2013. Despite that, 46 projects have already been implemented or are being implemented within its territory.
- There is a great interest especially in projects that support employment, the social environment or aim at supporting the LAG itself in its activities.

Discussion and conclusion

- The LAG contributes to the reimage of the environment through its calls, which are based on the SCLLD measures.
- As a body, the LAG is aware of the shortcomings of its territory, as it mentions in its strategy, but at the same time it highlights the advantages and potential of the territory.
- The results show that in the future development of municipalities in the LAG, greater emphasis should be placed on projects that increase the quality of life of residents and the attractiveness of municipalities to stabilize their growth in competition with strong urban regions.
- Based on the performed research, the research of reimage of the territory can be further developed. It is possible to develop research through a qualitative survey of local stakeholders and their evaluation of projects and the impact on the transformation of the image of the territory.



- The project was created with the help of UJEP in Ústí nad Labem - Faculty of Socio-Economics. Grant number: UJEP-SGS-2020-45-001-1

- **Contact address**

Ing. Martin Domín, Ing. Petr Hlaváček, Ph.D.

Univerzita J. E. Purkyně, Fakulta sociálně-ekonomická

Moskevská 54, 400 96, Ústí nad Labem, Česká republika

Email: martin.domin@mostzs15.cz;
petr.hlavacek@ujep.cz

Phone number: +420 475 284 910

Acknowledgement and Contacts